

# EXHAUST SYSTEM

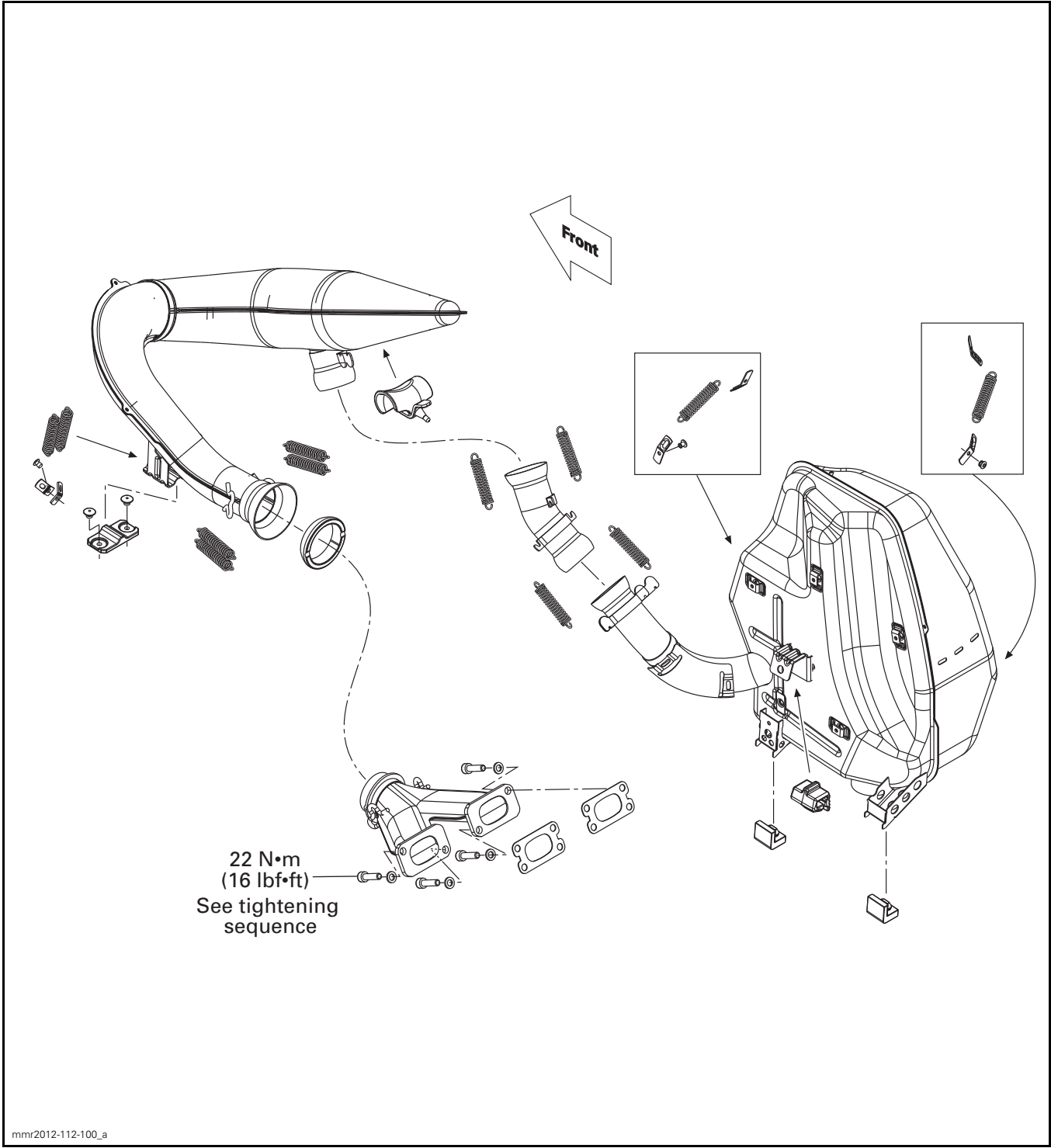
## SERVICE TOOLS

Description	Part Number	Page
SPRING INSTALLER/REMOVER .....	529 035 983 .....	3-4

## SERVICE TOOLS – OTHER SUPPLIER

Description	Part Number	Page
SNAP-ON 5 MM ALLEN SPHERICAL SOCKET .....	FABLM5E .....	5

Subsection XX (EXHAUST SYSTEM)



## GENERAL

### WARNING

To avoid potential burns, never touch exhaust system components immediately after the engine has been running because these components are very hot. Let engine and exhaust system cool down before performing any servicing.

During assembly/installation, use the torque values and service products as specified in the exploded view.

Clean threads before applying a threadlocker. Refer to *SELF-LOCKING FASTENERS* and *LOCTITE APPLICATION* at the beginning of this manual for complete procedure.

### WARNING

Torque wrench tightening specifications must be strictly adhered to. Locking devices when removed must be replaced (e.g.: locking tabs, elastic stop nuts, self-locking fasteners, cotter pins, etc.).

**NOTICE** Hoses, cables or locking ties removed during a procedure must be reinstalled as per factory standards.

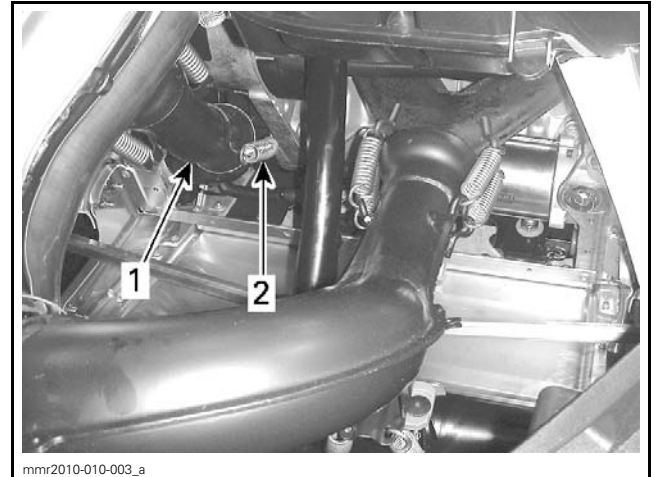
## PROCEDURES

### MUFFLER

#### Muffler Removal

1. Refer to *BODY* subsection and remove the following body parts:
  - Hood
  - RH side panels.
2. Reach in through the front of the vehicle and remove the two springs retaining the exhaust elbow pipe to the muffler using the following tool.

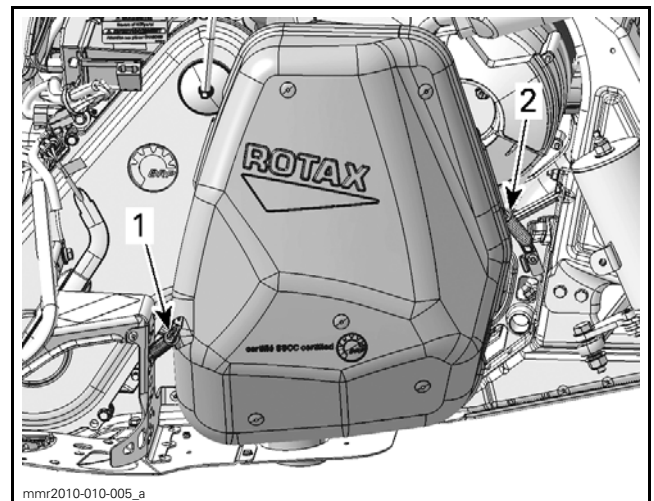
SPRING INSTALLER/REMOVER (P/N 529 035 983)



#### TYPICAL

1. Exhaust elbow pipe
2. Elbow pipe to muffler retaining spring (2)

3. Remove muffler retaining springs.



#### TYPICAL

1. Aft muffler retaining spring
2. Forward muffler retaining spring

4. Remove the muffler.

#### Muffler Inspection

Check the muffler for:

- Cracks
- Abnormal exhaust system leaks
- Overheating
- Other damages.

#### Muffler Installation

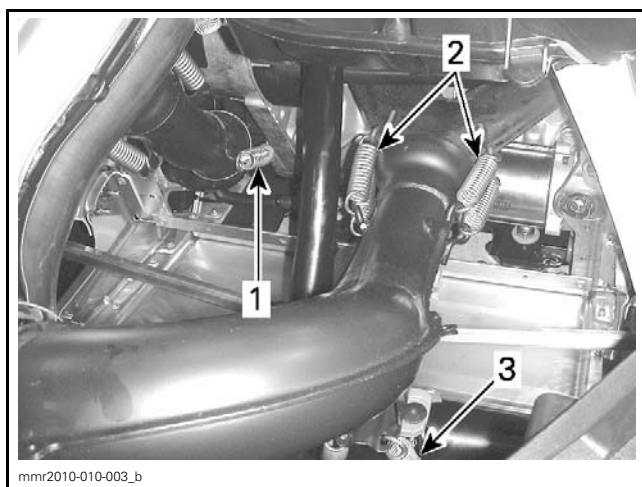
1. For installation, reverse the removal procedure.
2. Ensure the exhaust elbow pipe is properly connected to the muffler and the tuned pipe.
3. Check for abnormal exhaust system leaks.

## Subsection XX (EXHAUST SYSTEM)

### TUNED PIPE

#### Tuned Pipe Removal

1. Refer to *BODY* subsection and remove the following body parts:
  - Hood
  - RH side panels.
2. Remove exhaust system retaining springs in the following order:
  - Exhaust pipe elbow to muffler
  - Tune pipe to support bracket
  - Tune pipe to exhaust manifold.

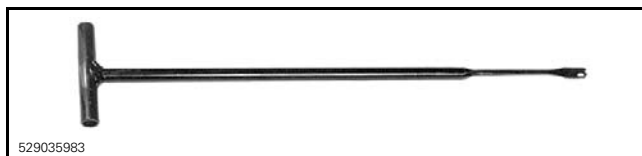


#### TYPICAL

1. Elbow pipe to muffler retaining spring
2. Tune pipe to exhaust manifold
3. Tune pipe to support bracket

Use the following tool to remove springs.

SPRING INSTALLER/REMOVER (P/N 529 035 983)



3. To remove the tuned pipe from the vehicle, carefully pull and lift up the forward end of the tuned pipe as you rotate it in a counterclockwise direction.



#### TYPICAL

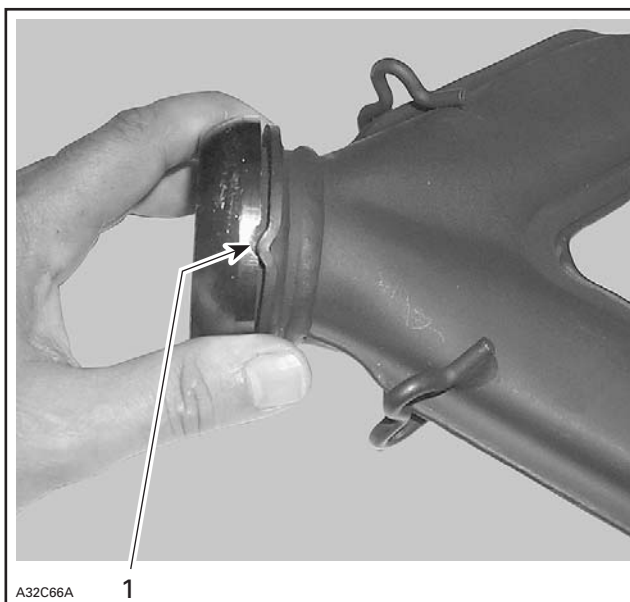
4. Remove doughnut shaped exhaust gaskets.

#### Tuned Pipe Inspection

1. Check tuned pipe and shields for:
  - Damages
  - Cracks
  - Signs of exhaust leaks.
2. Also inspect condition of doughnut shaped gasket. Replace as required.

#### Tuned Pipe Installation

1. Install doughnut shaped exhaust gasket with both of its notches aligned with Y-manifold protrusions.



#### TYPICAL

1. Align notches

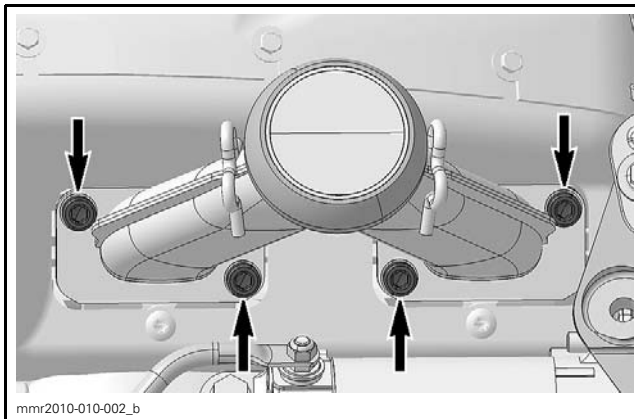
2. Install all exhaust system retaining springs.
3. Check for abnormal exhaust system leaks.

## MANIFOLD

### Manifold Removal

1. Remove tuned pipe. See *TUNED PIPE REMOVAL* in this subsection.
2. Remove manifold retaining screws using the following tool.

SNAP-ON 5 MM ALLEN SPHERICAL SOCKET  
(P/N FABLM5E)



MANIFOLD RETAINING SCREWS

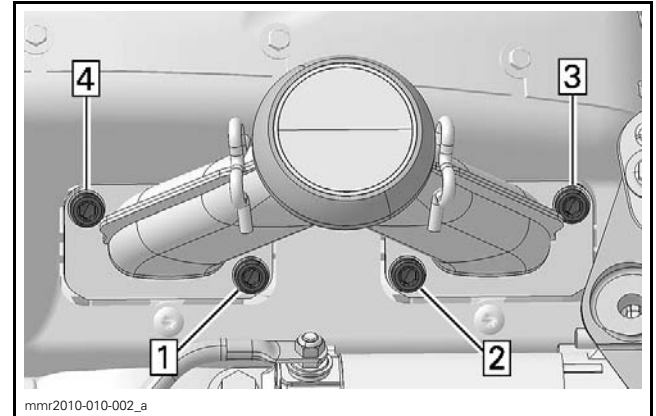
3. Remove manifold.
4. Remove manifold gaskets.

### Manifold Inspection

1. Check if the manifold is cracked or damaged. Replace as required.
2. Check condition of manifold gaskets.

### Manifold Installation

1. Install manifold gaskets, manifold and retaining screws.
2. Hand tighten manifold screws until they just bottom out.
3. Tighten manifold screws to specification as per the following sequence.



TIGHTENING SEQUENCE

ENGINE	TIGHTENING TORQUE
550F	22 N•m (16 lbf•ft)

4. Install tuned pipe. See *TUNED PIPE INSTALLATION* in this subsection.
5. Check for abnormal exhaust system leaks.